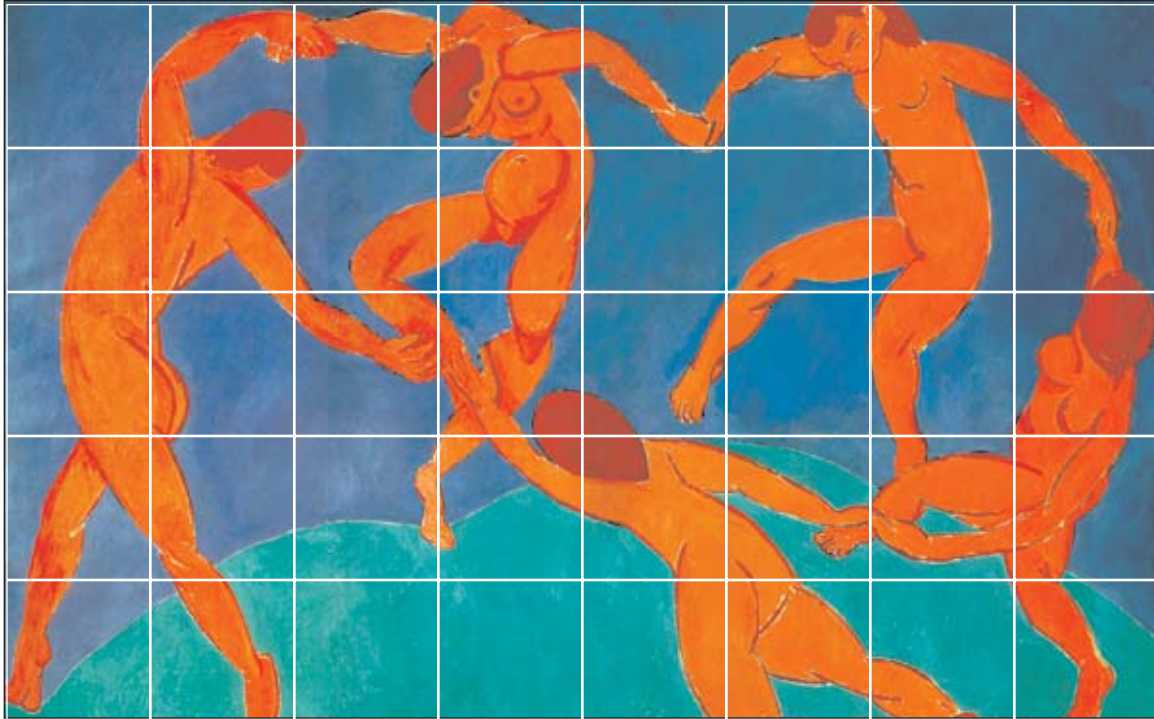


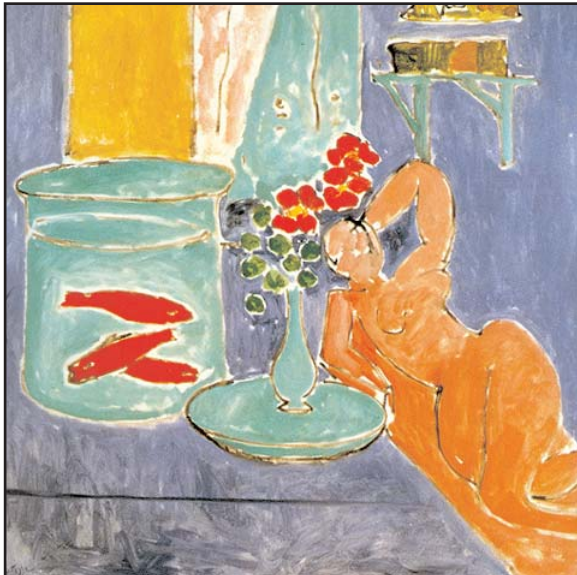
Job Title: **Matisse Line**

Date:	7/13/03
Dfmn:	jhc
Ref:	DOC

Estimated grout joints = 1/8th inch



Mural: Dancers (6'' x 6'') = \$ 48.00 per tile



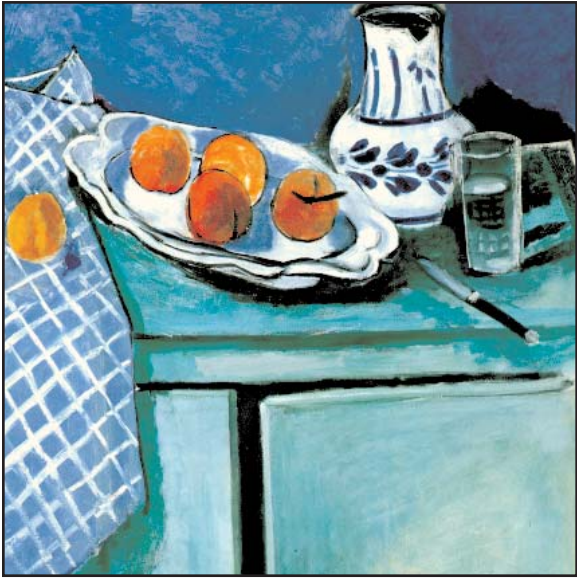
Woman & Fish (6'' x 6'') \$24.00 Each



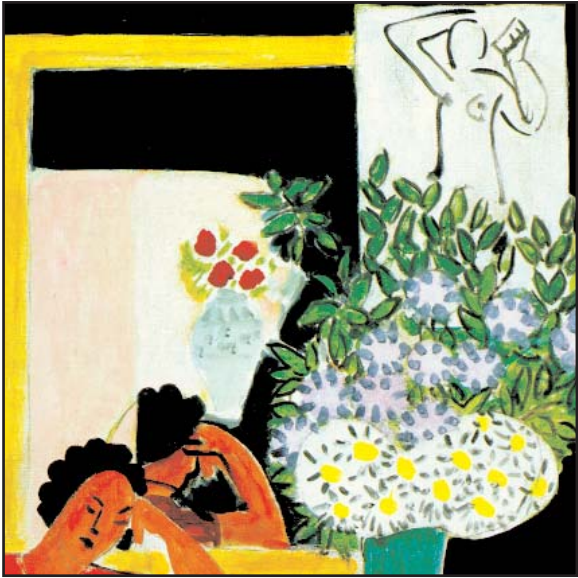
Woman & Daisies (6'' x 6'') \$24.00 Each

This is a quote and schematic designed to help you visualize a tile installation. Colors and dimensions may vary from actuals.

Estimated grout joints = 1/8th inch



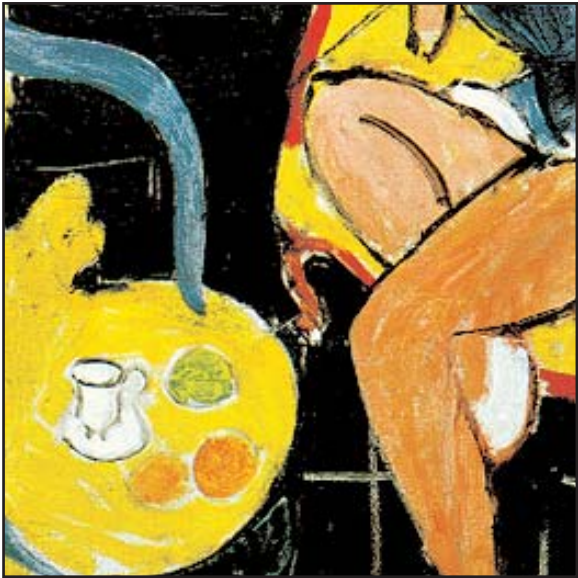
Pitcher & Fruit (6" x 6") \$24.00 Each



Daisies (6" x 6") \$24.00 Each



Two Pitchers (6" x 6") \$24.00 Each

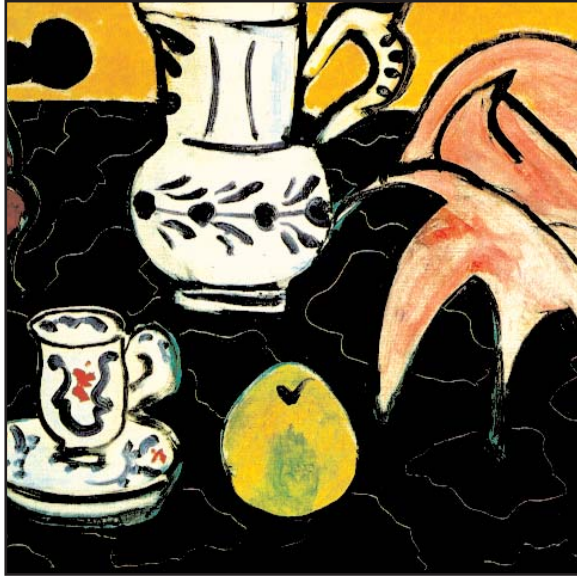


Coffee Time (6" x 6") \$24.00 Each

This is a quote and schematic designed to help you visualize a tile installation. Colors and dimensions may vary from actuals.

Job Title: Matisse Line

Date:	7/13/03
Dfmm:	jc
Ref:	



Pitcher & Pear (6" x 6") \$24.00 Each



2 Women (6" x 6") \$24.00 Each



Border (2" x 6") \$8.50 Each

This is a quote and schematic designed to help you visualize a tile installation. Colors and dimensions may vary from actuals.

Steuben Tile, 40 Main Street, Suite 303, Hornell, NY 14843
Tel: (607) 324-7002 Fax: (607) 324-7558